

# Analysis of submission outcomes and publication timelines for manuscripts submitted to Cell Press Community Review compared to direct journal submissions

Sejal Vyas<sup>1\*</sup>, Matthew Pavlovich<sup>1</sup>, and Jared Graves<sup>1</sup>

<sup>1</sup> Affiliations: Cell Press, Elsevier; \*Corresponding author

*9<sup>th</sup> International Peer Review Congress*

**Conflict of interest and funding disclosure:** All authors are employed by Cell Press. The authors declare no financial interests associated with this work. No funding was received for this work.

## Cell Press Community Review

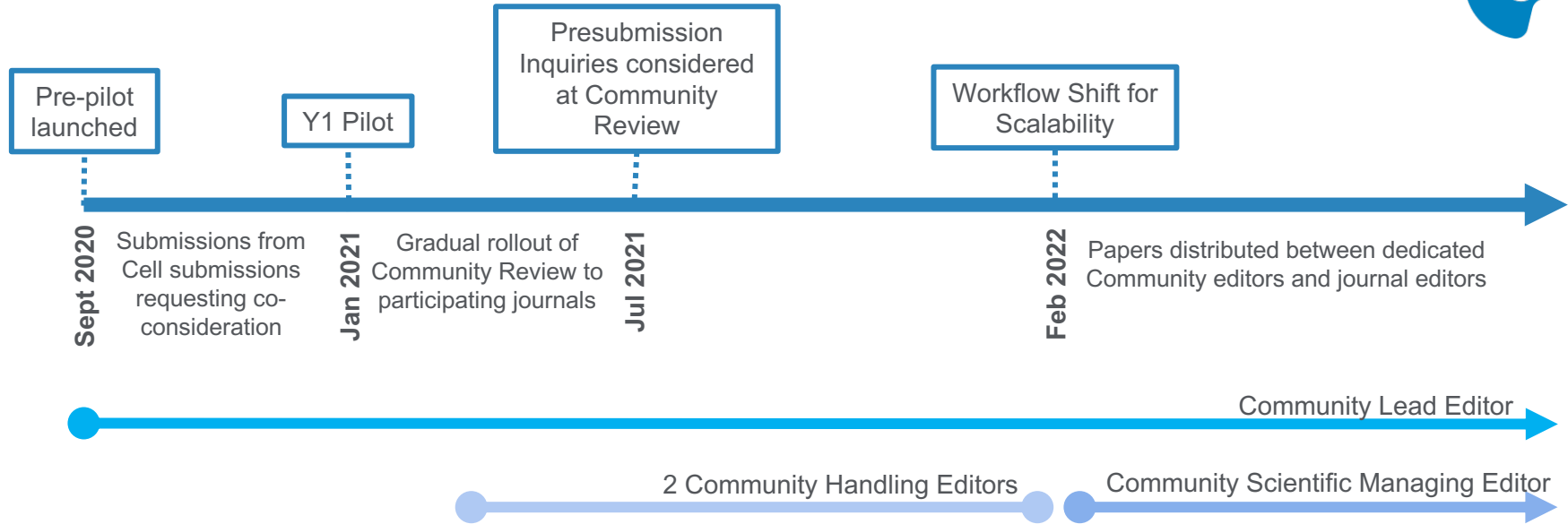
A new approach to peer review and publication

**Community Review is a new model for peer review that allows for simultaneous consideration of a manuscript at 20 Cell Press life and medical sciences journals in a single submission.**

### Goals

- **Improve author experience:** help authors find the right home for their paper quickly by increasing likelihood of peer review.
- **Improve author success:** increase ultimate success rate compared with transfer cascade.
- **Increase editorial efficiency:** invest less collective editorial time in reaching decisions.

# Community Review Evolution

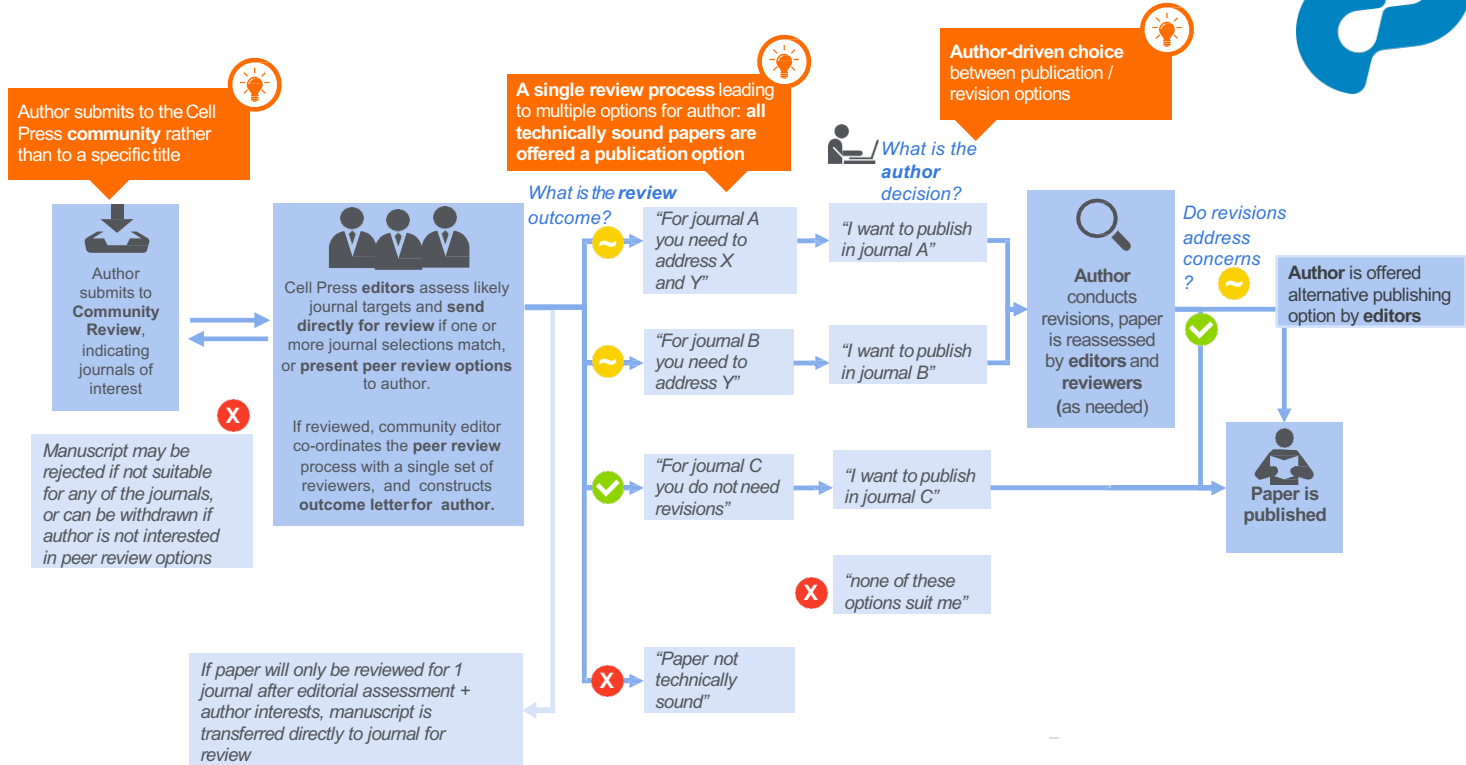


# Community Review Workflow



## Participating Journals:

- Cancer Cell
- Cell
- Cell Chemical Biology
- Cell Genomics (OA)
- Cell Host & Microbe
- Cell Metabolism
- Cell Reports (OA)
- Cell Reports Medicine (OA)
- Cell Reports Methods (OA)
- Cell Stem Cell
- Cell Systems
- Current Biology
- Developmental Cell
- Immunity
- iScience (OA)
- Med
- Molecular Cell
- Neuron
- Patterns (OA)
- Structure



# Author Feedback



- Most important reason to submit to Community was “**to be considered across a variety of high-quality journals**” (88% of authors found this important; 38 responses out of 258 surveys sent, 15% response rate)
- Positive author remarks focused on **time efficiency, helpfulness and clarity of the handling editor, and co-consideration for interdisciplinary work**
- Among authors who transferred out of Community pre-review, **91% would recommend Community Review as a submission mechanism** (11 responses out of 35 surveys sent, 31% response rate)
- 163 authors (**11% of 1545 unique authors**) have submitted to **Community more than once**

*My team members and I **really love the idea** behind it. I **hope it will become more popular** and common among all publishers.*

*I found the process of Cell Community Review to be **highly efficient**.*

*I think that Cell Community Press is a **great concept** and **will be eager to work with you again** on our next stories.*

# Study Design

**Comparison of peer review rate, post-review accept rate, and publication timeline for papers submitted between September 2020 and May 2022**



## Community Review

- Direct submissions and submissions via Cell for primary research articles considered
- Papers transferred to a journal for review are considered in review and post-review accept rates
- Publication timeline comprises of initial submission date at Community Review to acceptance date at receiving journal

## Direct Submission to Participating Journal

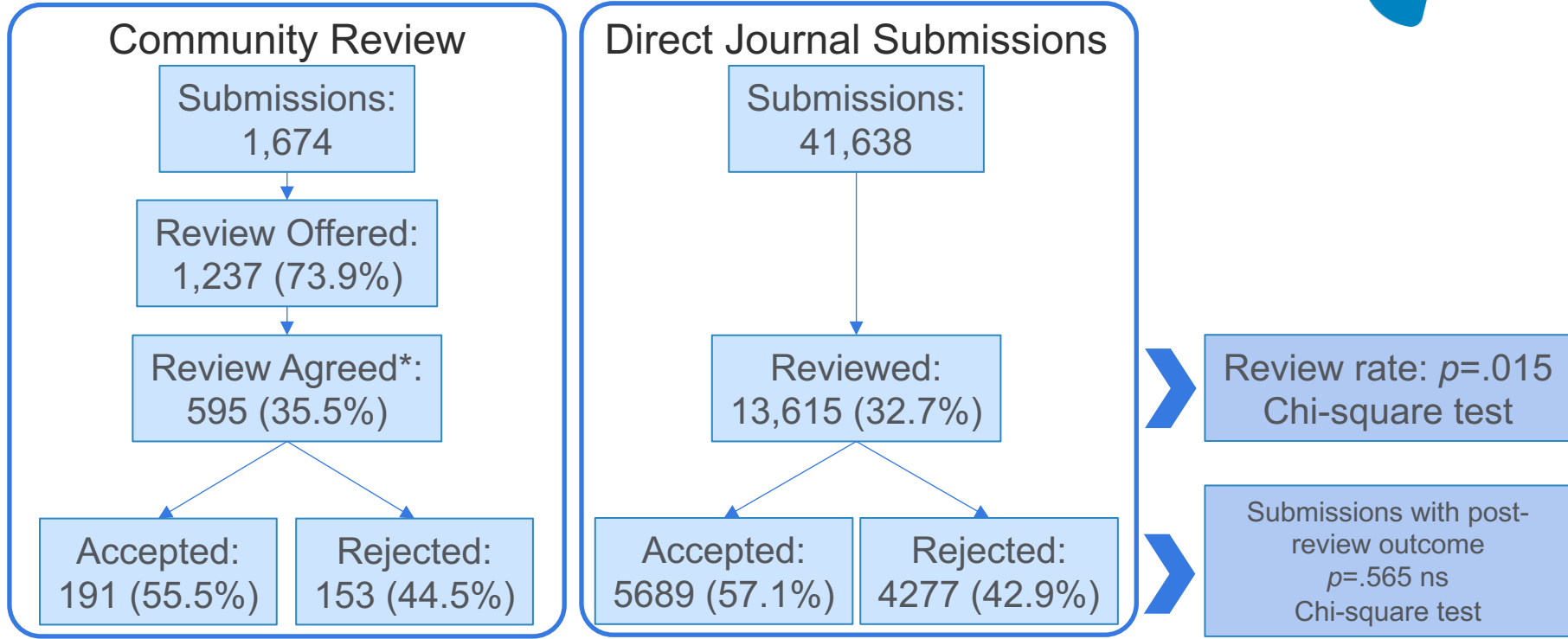
- Global, unique manuscript submissions for primary research articles are considered
- Submissions originating from Community Review are excluded
- Publication timeline comprises of initial submission date at first journal to acceptance date at final journal

## Limitations

- Final outcomes of articles not transferred via an article transfer link can not be tracked
- Direct submissions to participating journals include direct submissions to iScience – a subset of these will be physical science papers that aren't a direct comparison for Community Review submissions
- History of papers prior to September 2020 is not accounted for
- Assumption that authors transferring out of Community for review follow through with review once at the receiving journal



# Review and Accept Rate Analysis



# Publication Timeline Analysis



Peer Review Model	Number of Editorial Reject/ Transfer cycles	Number of Papers	Average Publication Time, days (SD)	Median Publication Time, days
Direct Submission to Participating Journal	0	4158	174 (91)	158
	1	1356	204 (91)	185
	2	168	211 (89)	199
	3	6	249 (51)	234
	4	1	442 (N/A)	N/A
Community Review	N/A	156	201 (75)	192

# Updated Analysis Jan 2021-June 2022



- Papers submitted during pre-pilot excluded as these only originated from Cell submissions and are not a representative comparison to papers submitted across all participating journals
- Initial direct submissions to iScience are excluded, but papers accepted at iScience originating from either Community or direct journals submissions are included.
- Review rate defined as reviewed papers/submissions for submissions in Jan 2021-Jun 2022.
- Accept rate defined as accepts/submissions for papers accepted Jan 2022-Jun 2022.
- Average time defined as time from submission to first journal to accept in last journal for papers accepted in Jan 2022-Jun 2022.

	Review rate	Accept rate*
<b>Journals</b>	30.6% (10027/32804)	17.4% (1897/10875)
<b>Community</b>	32.5% (567/1745)	20.6% (145/705)

\* $p=.03$   
Chi square test

Peer Review Model	Number of Editorial Reject/ Transfer cycles	Number of Papers	Average Publication Time, days (SD)	Median Publication Time, days
<b>Direct Journal Submission</b>	0	1229	209 (97)	196
	1	596	218 (88)	203
	2*	67	231 (95)	229
	3*	5	272 (68)	236
<b>Community</b>	N/A	145	207 (74)	203

\*Community vs 2+ transfers,  $p=.03$  T-test



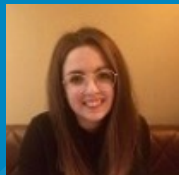
## Conclusions

- A **larger proportion of manuscripts are sent for review** via Community Review compared to direct journal submissions
- **Post-review accept rates are similar** – manuscripts sent for review are considered similarly by reviewers
- Community Review **publication timeline is comparable to direct journal submissions (overall)** and is **faster than direct journal submissions that undergo 2 or more rounds of editorial reject/transfer**

# The Community Review Team



**Sejal Vyas**  
Lead Editor



**Andrea Halsey**  
Scientific Managing Editor



**Matt Pavlovich**  
Product Manager



**Jared Graves**  
Senior Editorial  
Operations Manager



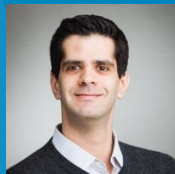
**Annemarie Tompsen**  
Senior Editorial  
Operations Supervisor



**Matthew Yuen**  
Senior Editorial  
Operations Associate



**Elisa De Ranieri**  
Head of RIAx



**Jon Saxe**  
Deputy Head of RIAx

## Community Consulting Editors



**Steve Mao**  
Editor-in-chief  
*Cancer Cell*



**Montse Rojo de la Vega**  
Deputy editor  
*Cancer Cell*



**Sri Narasimhan**  
Deputy editor  
*Cell*



**Lara Szewczak**  
Deputy editor  
*Cell*



**Mishtu Dey**  
Editor-in-chief  
*Cell Chemical Biology*



**Ella Hinson**  
Deputy Editor  
*Cell Host & Microbe*



**Alyson Evans**  
Editor-in-chief  
*Cell Metabolism*



**Karin Kühnel**  
Editor-in-chief  
*Structure*



**Stephen Matheson**  
Editor-in-chief  
*Cell Reports*



**Gail Teitzel**  
Deputy editor  
*Cell Reports*



**Natalie Calvin**  
Deputy Editor  
*Cell Reports*



**Sara Hamilton**  
Editor-in-chief  
*Cell Reports Medicine*



**Sha Yu**  
Scientific editor  
*Cell Reports Medicine*



**Ruth Zearfoss**  
Editor-in-chief  
*Cell Reports Methods*



**Emily Marcinkiewicz**  
Scientific editor  
*Cell Reports Methods*



**Sheila Chari**  
Editor-in-chief  
*Cell Stem Cell*



**Christine Weber**  
Senior editor  
*Cell Stem Cell*



**Bernadett Gaál**  
Acting Editor-in-chief  
*Cell Systems*



**Geoffrey North**  
Editor-in-chief  
*Current Biology*



**Deborah Taylor**  
Senior deputy editor  
*Current Biology*



**Masha Gelfand**  
Senior editor  
*Developmental Cell*



**Peter Lee**  
Editor-in-chief  
*Immunity*



**Fabiola Rivas**  
Deputy Editor  
*Immunity*



**Stefano Tonzani**  
Lead editor  
*iScience*



**Simona Fiorani**  
Lead editor  
*iScience*



**Alfredo Sansone**  
Deputy editor  
*iScience*



**Rituparna Chakrabarti**  
Scientific editor  
*iScience*



**Sheba Agarwal-Jans**  
Scientific editor  
*iScience*



**Alessio Bolognesi**  
Scientific editor  
*iScience*



**Judith Nicholson**  
Scientific editor  
*iScience*



**Maria Mytilinou**  
Scientific editor  
*iScience*



**Nikla Emambokus**  
Editor-in-chief  
*Med*



**Salvatore Fabbiano**  
Scientific Editor  
*Med*



**Brian Plosky**  
Editor-in-chief  
*Molecular Cell*



**Krista Bledsoe**  
Senior editor  
*Molecular Cell*



**Megha Gulati**  
Scientific editor  
*Molecular Cell*



**Rebecca Eccles**  
Scientific editor  
*Molecular Cell*



**Mariela Ziringer**  
Editor-in-chief  
*Neuron*



**Ulrich Schridde**  
Senior editor  
*Neuron*



**Sarah Callaghan**  
Editor-in-chief  
*Patterns*

Thank you for your attention!  
Questions?